

## Excel's Mission Statement

Students of Excel Academy Private School engage in a safe and nurturing learning environment. Enrichment and real life opportunities allow for students to further broaden their educational foundations.

## Philosophy

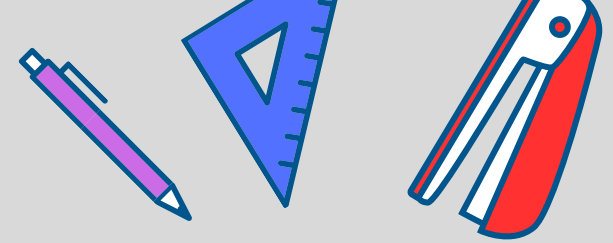
Excel Academy, Executive Director, Jennifer Wistisen believes that each child is. unique individual who needs a secure, caring, and stimulating atmosphere in which to grow and mature emotionally, intellectually, physically, and socially. It is her desire for all Excel educators to help students reach their fullest potential in these areas by providing an environment that is safe, supports risk-taking, and invites sharing of ideas. Elements conducive to establishing such a learning environment are: Allowing the child's natural curiosity to direct his/ her learning. Promote respect for all things and all people.



# EXCEL ACADEMY PRIVATE SCHOOL

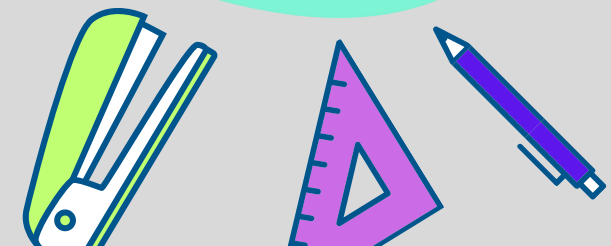
## CONTACT US

500 S. Jefferson St.  
Casper, WY 82601  
307-237-3963 office  
307-259-4599 cell  
[jawistisen@excelacademywy.com](mailto:jawistisen@excelacademywy.com)



# EXCEL ACADEMY PRIVATE SCHOOL 2024-2025

A NEW WAY TO LEARN!  
[www.excelacademywy.com](http://www.excelacademywy.com)





## **EXCEL JR. ACADEMY 2/3 YEAR OLD CLASS**

**ALL classes are Monday-Friday  
(September-May)**

**8:00a-11:00a**

**\$280.00/mo OR \$2150.00 if  
paid in full by 8-1-2024**

**\*6 student min/ 8 student  
max**

**\*\*One time, \$50.00  
registration fee**

**(NON-REFUNDABLE)**

**DFS payments accepted**

**Potty trained is encouraged,  
but not required.**



**Excel Jr. Academy**

**3-6 year old classes**

**(MUST BE Bathroom Independent)**

**ALL classes are Monday-Friday**

**(September-May)**

**A.M. Class 8:00a-11:00a**

**P.M. Class 11:30a-2:35p**

**A.M. or P.M. \$315.00/mo**

**All Day Class 8:00-2:35p**

**\*A.M. or P.M. class is \$315.00/mo or  
paid in full is \$2450.00. All Day Class  
is \$605.00/mo or \$4900.00 if paid in  
full by 8-1-2024**

**\*\*One time, \$50.00 registration fee  
(NON-REFUNDABLE)**

**DFS payments accepted**



## **EXCEL ACADEMY K-12 CLASSES**

**ALL CLASSES ARE MONDAY-FRIDAY  
(SEPTEMBER-MAY)**

**8:00A-2:35P**

**\$715.00/MO OR \$5750.00 IF PAID IN  
FULL BY 8-1-2024**

**\*\*ONE TIME, \$50.00 REG. FEE  
(NON-REFUNDABLE)**

